

Introduction to Networks

1

BCNS1207C

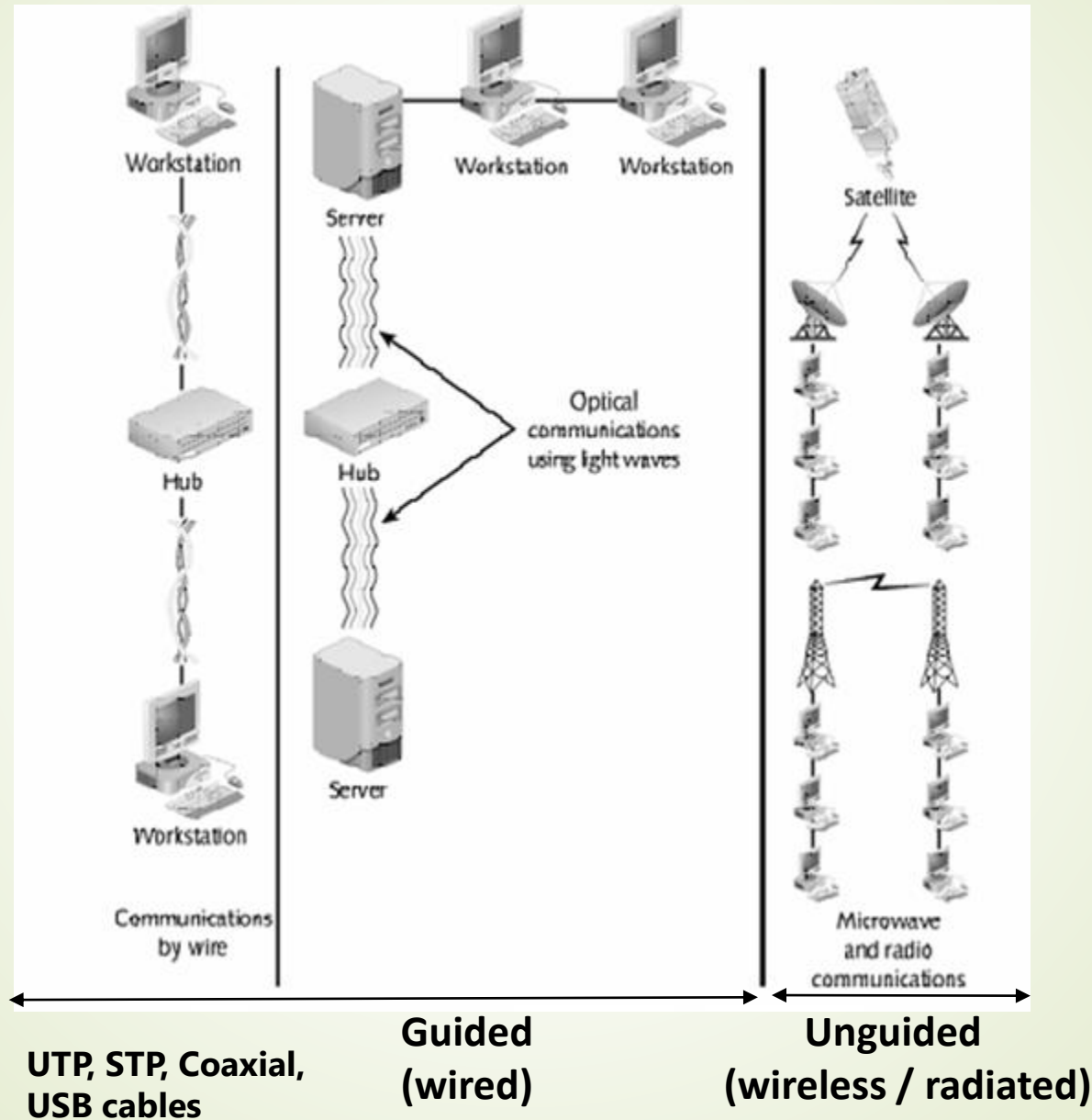
Network: Definition

2

- A set of devices (**nodes**) connected by **communication links** (wired or wireless).
- A **node** can be a computer, or any device capable of sending and/or receiving data generated by other nodes on the network.
- A network must be able to meet a certain number of criteria. The most important of those are: **Performance, Reliability, Security and Cost.**

Types of Communication Links

3



Physical Topology

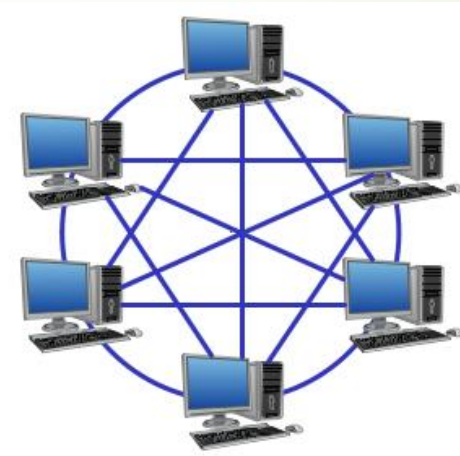
4

- The **physical topology** refers to the way a network is laid out spatially.
- **Two** or more **nodes** connect to a **link**.
- **Two** or more **links** form a **topology**.
- The **topology** is the geometric representation of the relationship of all the links and nodes to one another.
- There are usually **four** basic topologies: **Mesh**, **Star**, **Bus** and **Ring**.

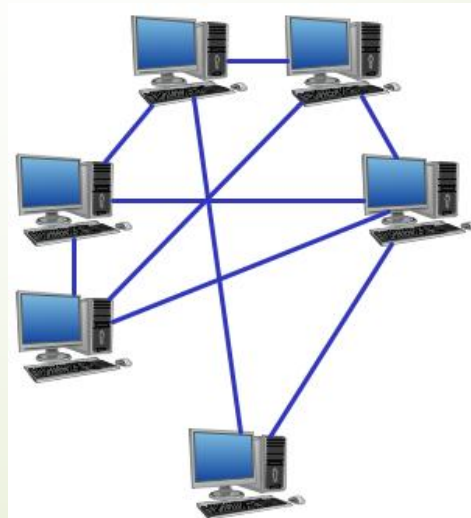
Mesh Topology

- In a **mesh topology**, every node has a **dedicated point-to-point** link to every other node.

Full-Mesh:

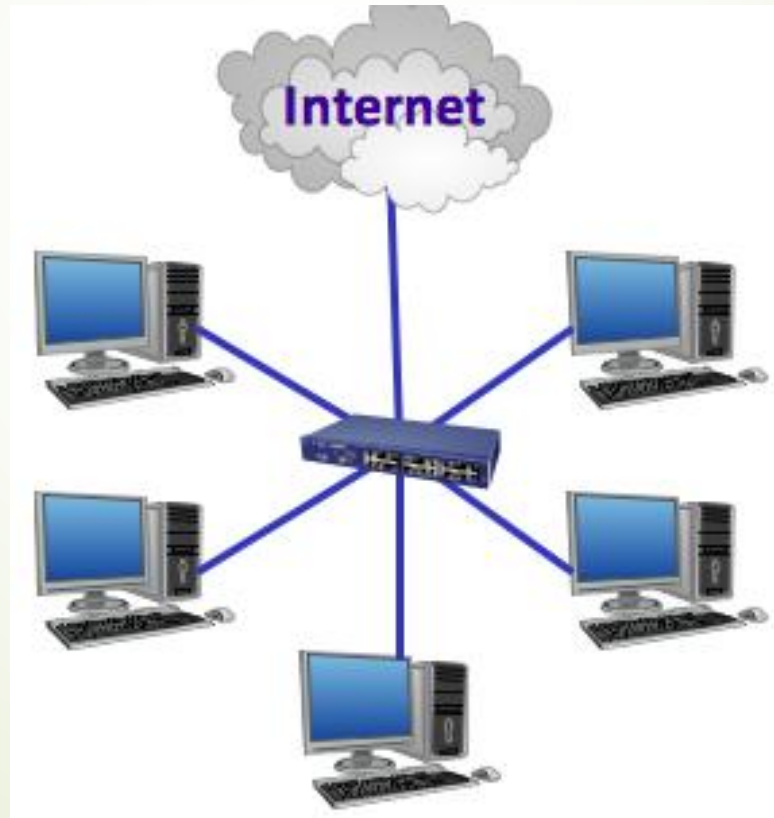


Partial-Mesh:



Star Topology

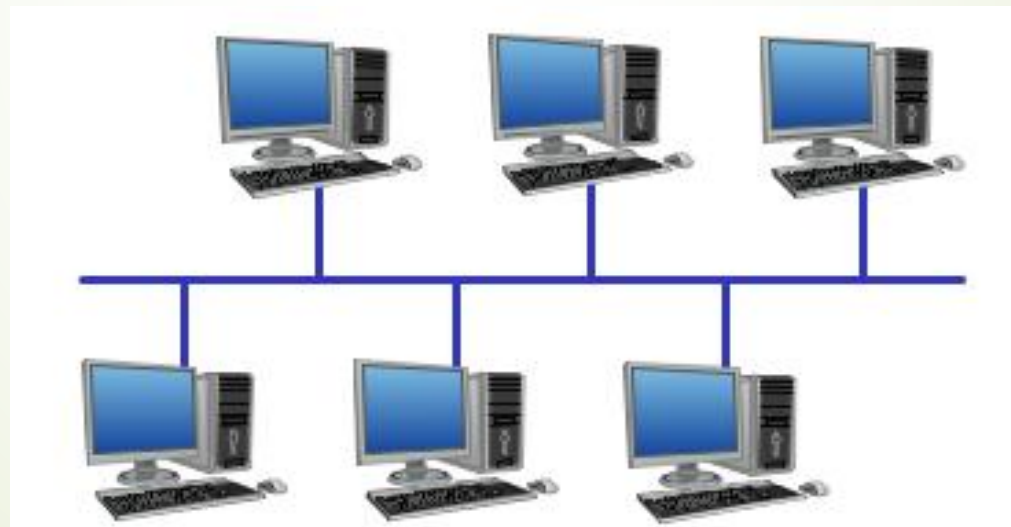
- In a **star topology**, each node has a **dedicated point-to-point** link only to a central controller, usually a **switch**.



Bus Topology

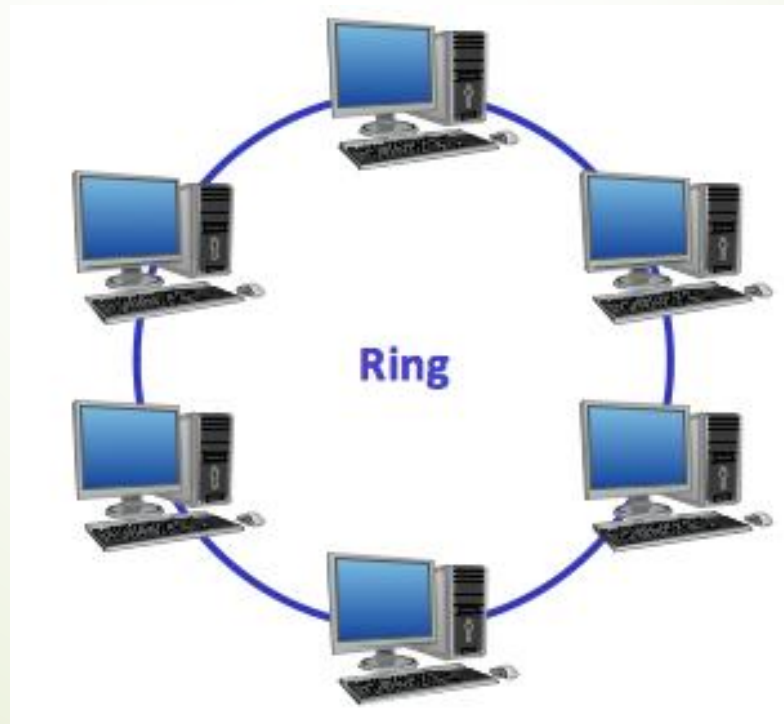
7

- In a **bus topology**, a **multipoint** link is used. One long cable acts as a **backbone** to link all the devices in a network.



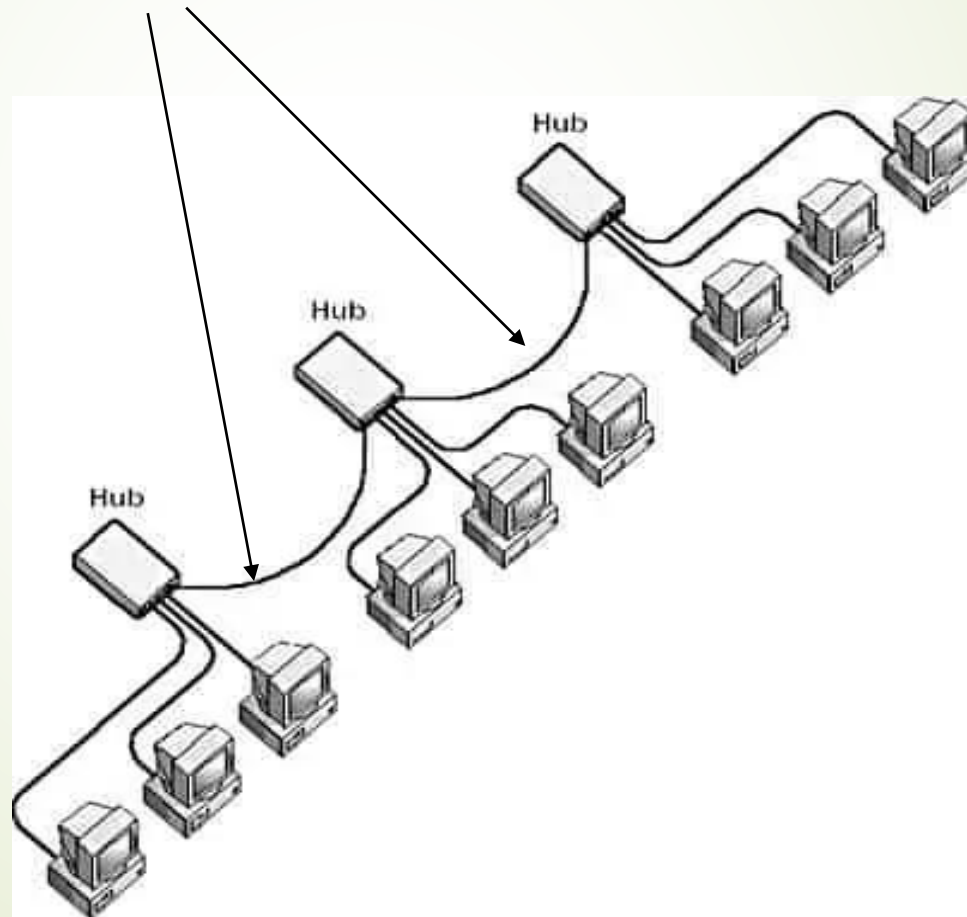
Ring Topology

- In a **ring topology**, each node has a **dedicated point-to-point** link only with the **two** nodes on either side of it.



Hybrid: Star Bus Topology

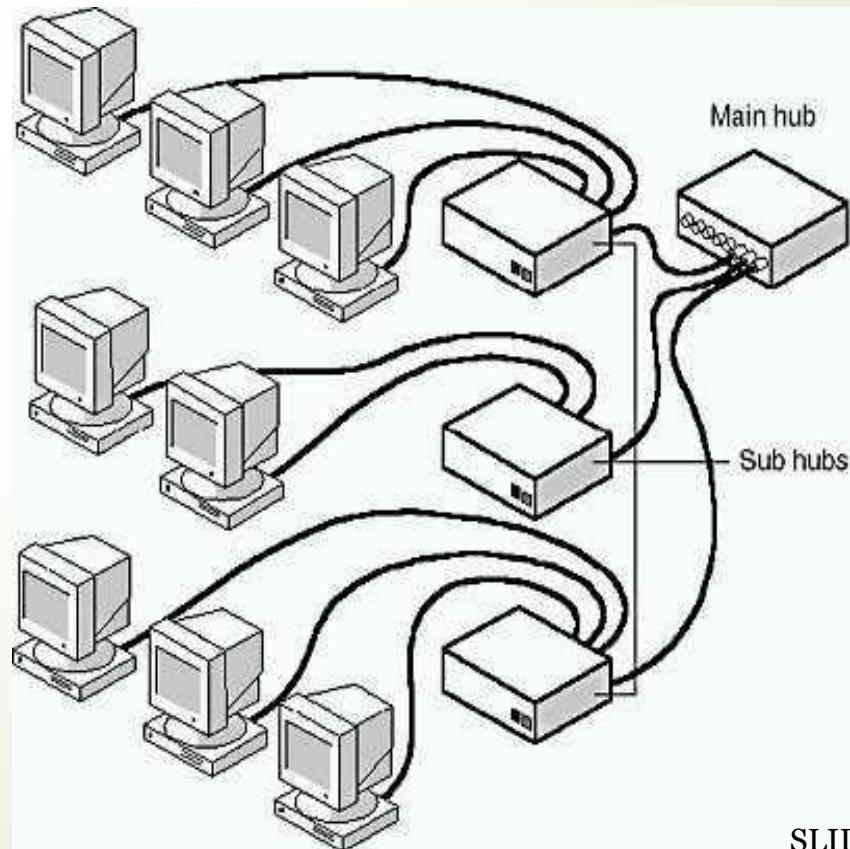
- In a **star bus topology**, **several star topology networks** are linked together with **linear bus trunks**.



Hybrid: Star Ring Topology

10

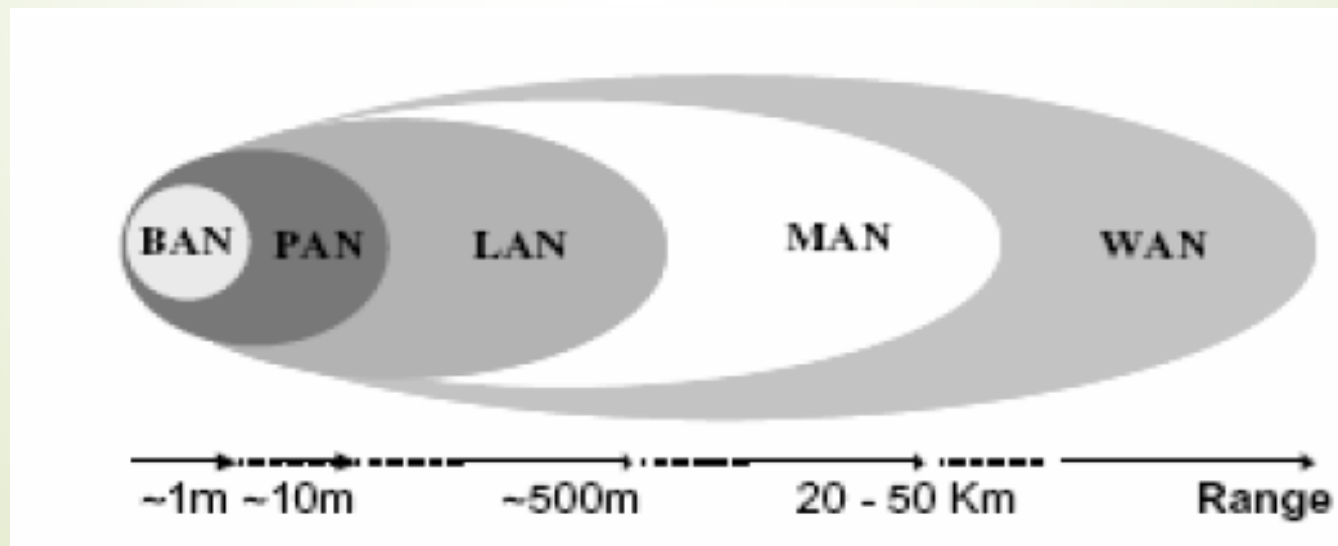
- In a **star ring topology**, **sub hubs** are linked together in a **star pattern** to a **main hub**, rather than to themselves with **linear bus trunks**.



Network Types Defined

11

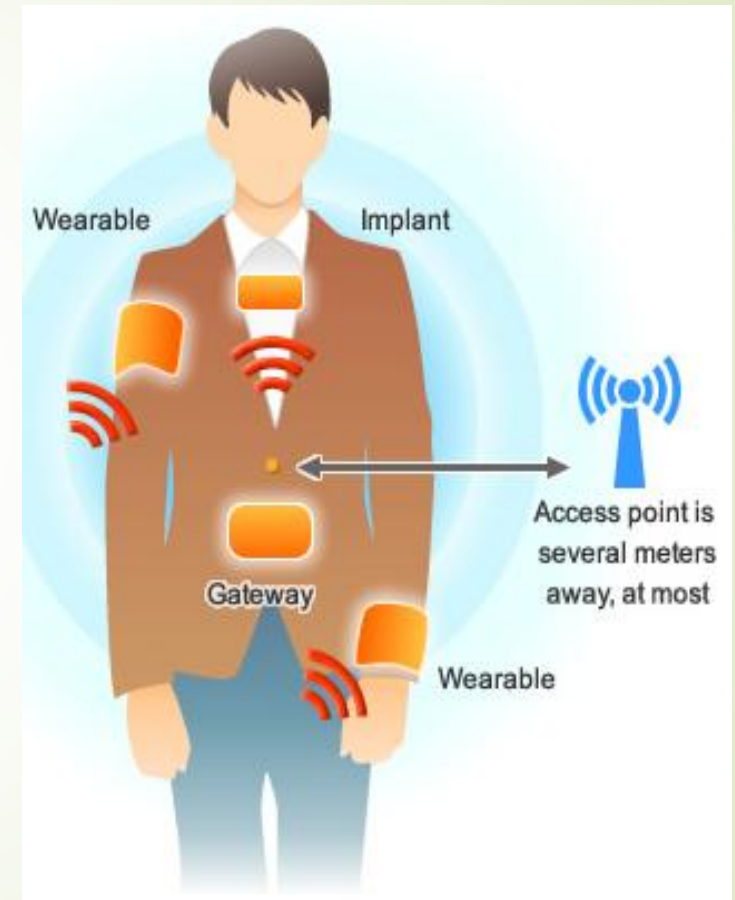
- Body Area Network
- Personal Area Network
- Local Area Network
- Metropolitan Area Networks
- Wide Area Networks



Body Area Network (BAN)

12

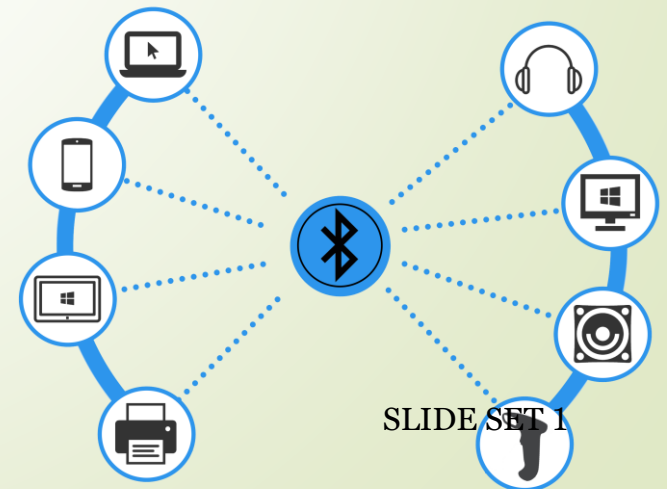
- Short range wireless network which consists of wearable or implanted electronic devices that transmit ID or sensor data to gateway device.
- It is also referred to as Wireless Body Area Network (WBAN) or Body Sensor Network (BSN) and spans less than 1 metre.



Personal Area Network (PAN)

13

- A Personal Area Network (PAN) is a computer network used for communication amongst computing devices (Smartphones, PDAs, Tablets) close to one person. The reach of a PAN is typically a few meters (<10 m).
- Personal area networks may be wired by computer buses such as USB and FireWire. However, Wireless Personal Area Network (WPAN) is made possible with network technologies such as IrDA, Bluetooth and Zigbee.

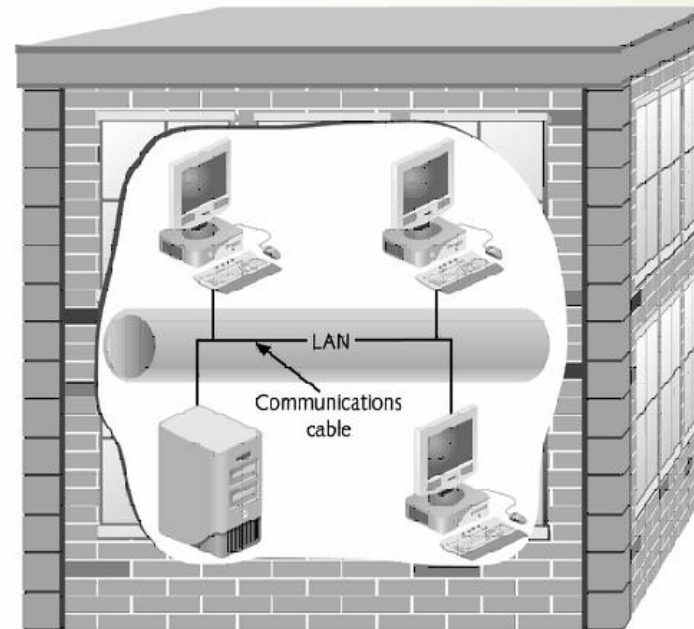


SLIDE SET 1

Local Area Network (LAN)

14

- Series of interconnected computers, printing devices, and other computer equipment that share hardware and software resources
- Service area usually limited to a given office area, floor, or building and is usually privately-owned.

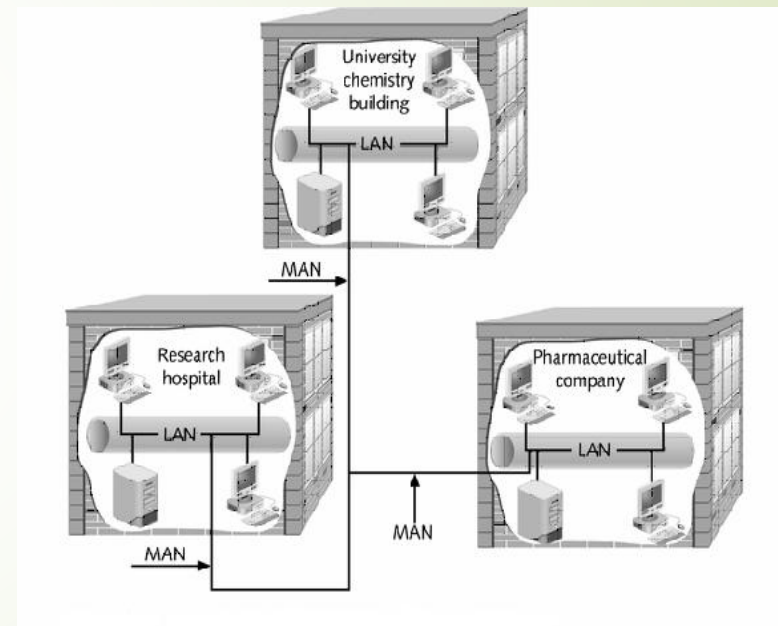


SLIDE SET 1

Metropolitan Area Network

15

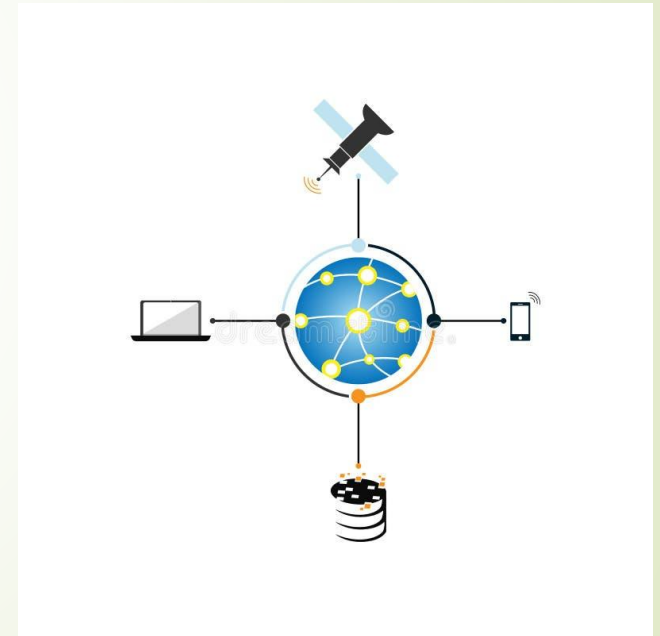
- Links **multiple LANs** in a large city or metropolitan region.
- May be wholly owned & operated by a private or public company such as a local telephone company.
- Many **telcos** provide services like **Switched Multi-Megabit Data Services (SMDS)**.



Wide Area Network (WAN)

16

- Provides long-distance transmission of data, voice, image and video information over large geographic areas that may comprise a country, a continent, even the whole world.
- The best example of a WAN is the **Internet**.



Identifying a Network Type

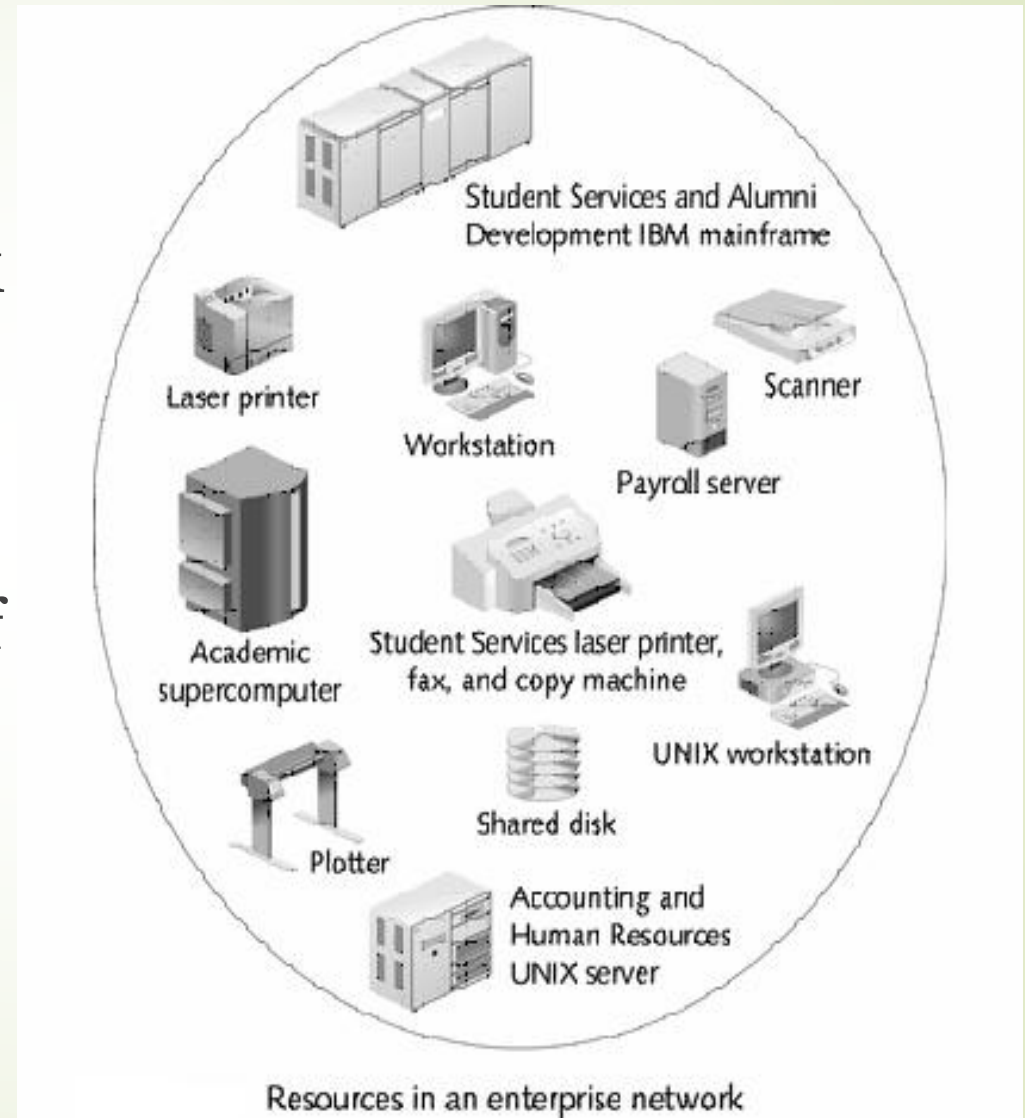
17

- Communications medium
 - Wire cable, fiber-optic cable, radio waves, microwaves, infrared radiation.
- Protocol
 - How networked data is formatted into discrete units
 - How each unit is transmitted and interpreted
- Topology
 - Physical layout of cable and logical path
- Network type
 - Private versus public

Network Classification

18

- **Enterprise network**
 - Combination of **LANs, MANs, or WANs** that provides users with an array of computer and network resources to complete different tasks.



Events that Led up to LANs and WANs

- **1800s**
 - Oersted
 - Morse
 - Undersea cable
 - Pony Express
 - Bell
- **1900s**
 - Transcontinental and transatlantic calls
 - Voice digitization
 - Electronic digital computers
 - Transistors
 - Sputnik
 - Communications satellites
 - ASCII
 - Mass-produced minicomputers

LAN/WAN History: 1960s

20

- First WAN
- Hypertext
- Use of fiber optics for phone signals
- Beginning of ARPANET
- Packets and packet switching
- UNIX
- Telecommunications equipment
- First IMP prototype

LAN/WAN History: 1970s

21

- Ethernet
- ARPANET - 15 sites
- E-mail
- Terminal emulation
- International connections to ARPANET
- Telecommunications conversion from analogue to digital
- X.25
- First wireless gateway
- Internet Protocol
- LSI and VLSI chips
- ICCB later IAB

LAN/WAN History: 1980s

22

- BITNET
- IBM's PC
- Dial-up modem technology
- TCP and IP adopted as protocol suite for ARPANET
- First PC LAN
- Arrival of Internet
- Internetwork hosts
 - 5,000 in 1986
 - 100,000 in 1989
- “Cyberspace”
- T-carrier services
- NFSNET
- Desktop authoring and multimedia
- SNMP

LAN/WAN History: 1990s

23

- ARPANET retired
- SS7 technology
- NSFNET opened to commercial use
- First cyberbank
- Internet service providers
- Over 16 million Internet hosts

LAN/WAN History: 2000s

24

- IPv6 used for Internet2 backbone communications
- Video and radio capability
- Prices of 1-Gbps devices fall as competition increases

LAN/WAN History: 2010s

25

- Cloud Services commonplace
- Internet of Things (IoT)
- 10G, 25G, 40G and 100G Ethernet has been developed

LAN/WAN Integration

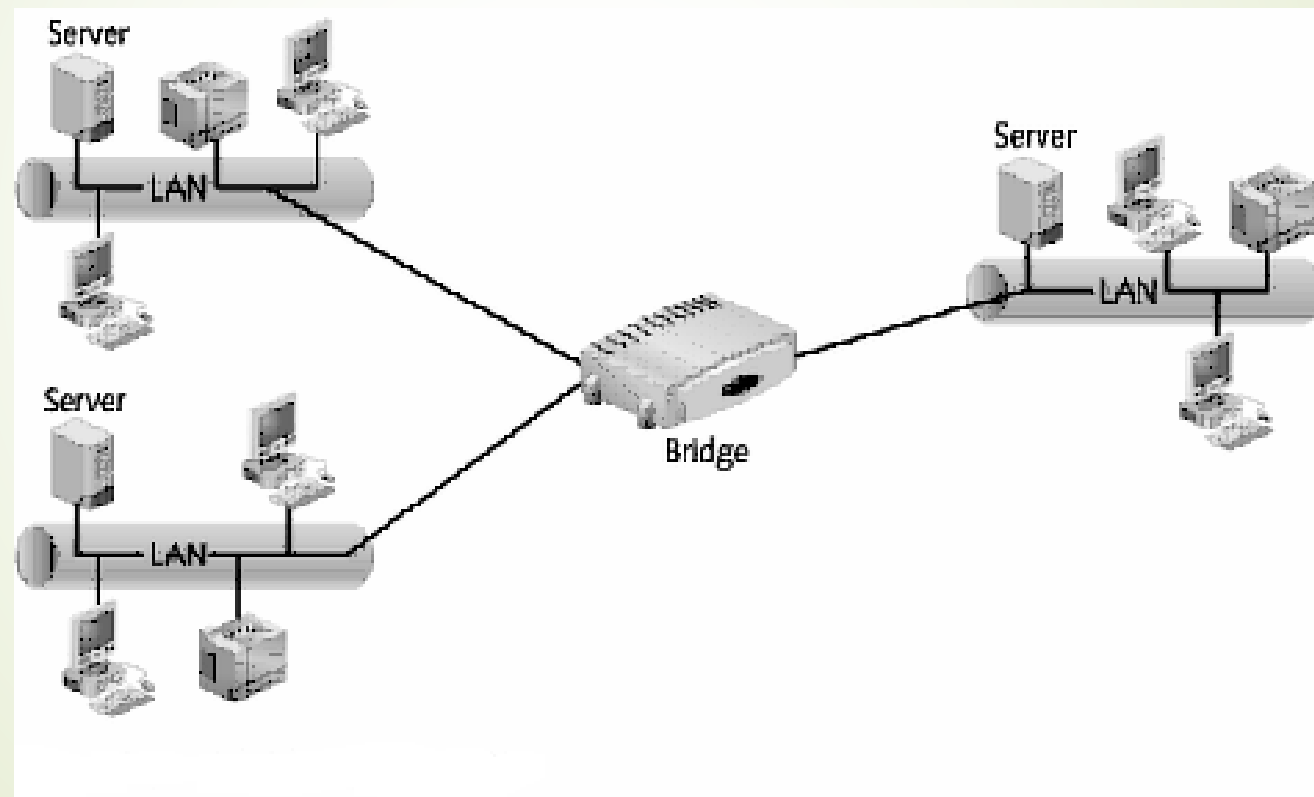
26

- Becoming more advanced through networking devices like
 - Modems
 - Bridges
 - Routers
 - Gateways
 - Switches
 - Firewalls
 - Access Points

Bridges (almost obsolete replaced by switches)

27

- Connect different LANs or LAN segments using the **same access method**



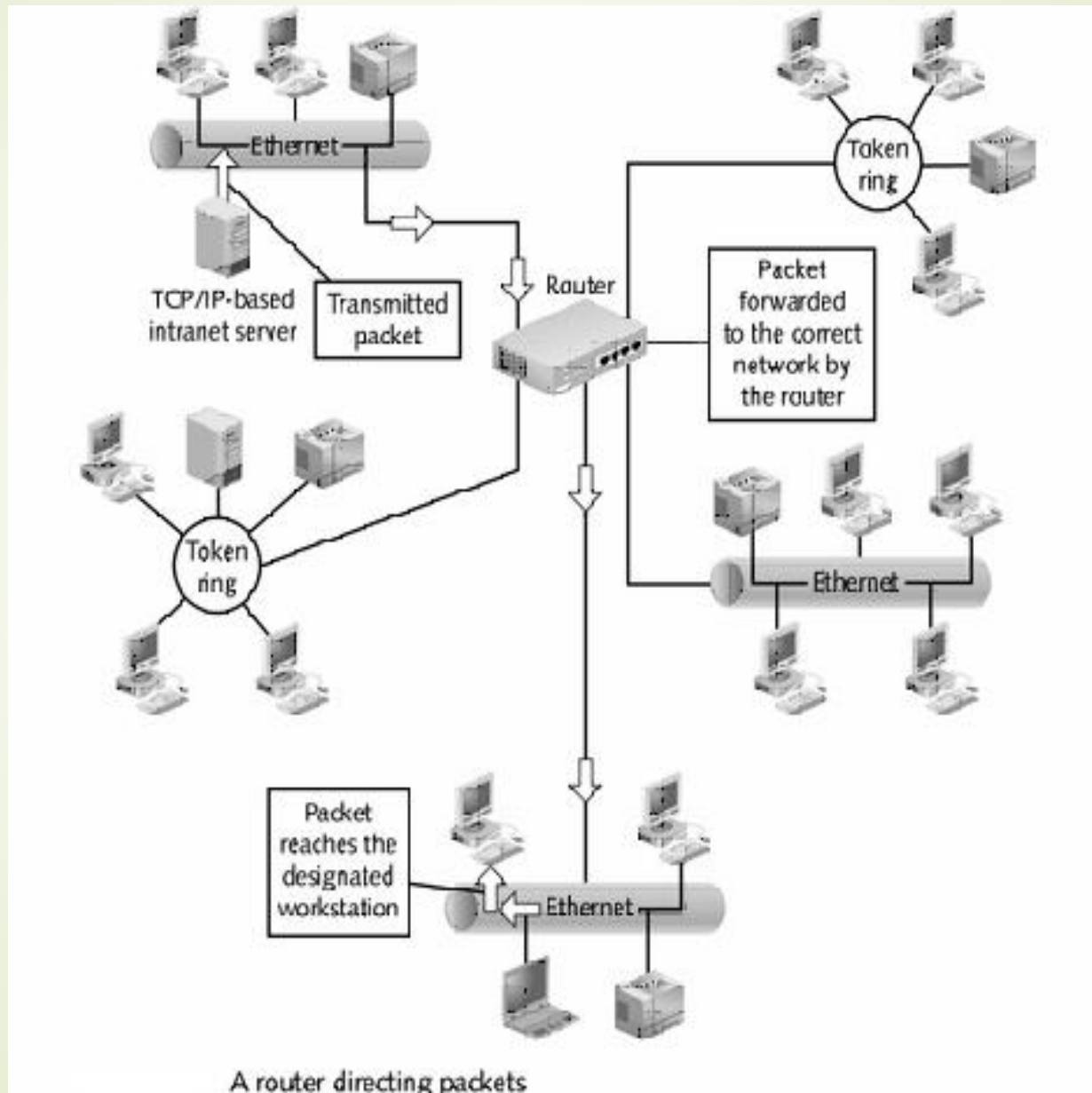
Routers

28

- Connect networks having the same or different access methods and media
- Route packets or datagrams to networks by using a decision-making process based on:
 - Routing table data
 - Discovery of most efficient routes
 - Pre-programmed information from network administrator

Routers

29



Link-Layer or Layer 2 Switches

30

- Link network segments
- Forward and filter frames between segments
- Different types depending on speed, number of ports, manageability, mode of switching, etc.

